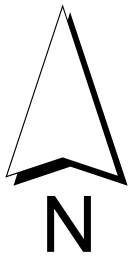


290440 291120 291800 292480 293160

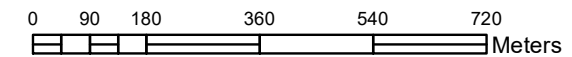


692480  
691800  
691120  
690440  
689760

### Hydrological Surface Map of Nnamdi Azikiwe University Awka Campus

Scale:  
1:12,000

1 cm = 120 meters



#### Legend

- |   |    |
|---|----|
| Unizik Ventures                         | 1  |
| Chapel of Glory                         | 2  |
| University Medical Centre               | 3  |
| St. Joseph the Worker Chaplaincy        | 4  |
| Chapel of Redemption                    | 5  |
| Faculty of Environmental Sciences Annex | 6  |
| School of General Studies               | 7  |
| Department of Architecture              | 8  |
| Unizik Business School                  | 9  |
| University Cooperative Society Building | 10 |
| Gauze Pharmaceuticals                   | 11 |
| Post Office                             | 12 |
| Faculty of Education                    | 13 |
| Confucius Institute                     | 14 |
| Faculty of Environmental Sciences       | 15 |
| Central Utility Building                | 16 |
| Faculty of Agriculture                  | 17 |
| Administration, Block                   | 18 |
| Chike Okoli Building                    | 19 |
| School of Post Graduate Studies         | 20 |
| Faculty of Engineering                  | 21 |
| Digital Library                         | 22 |
| Chinua Achebe Complex                   | 23 |
| Faculty of Arts                         | 24 |
| Faculty of Law                          | 25 |
| Chinese Accommodation                   | 26 |
| Chief Stella Okoli Building             | 27 |
| Robert Akaubi Hostel                    | 28 |
| SUG Hostel Block E                      | 29 |
| Basil Oli Hostel                        | 30 |
| Department of Economics                 | 31 |
| Department of Mass Communications       | 32 |
| Unizik 94.1 FM Studio                   | 33 |
| Faculty of Management Sciences          | 34 |
| Faculty of Biological Sciences          | 35 |
| Faculty of Physical Sciences            | 36 |
| Works & Transport Services Department   | 37 |
| Proposed Store Building                 | 38 |
| Juhel Filling Station                   | 39 |
| Elmada Hostel                           | 40 |
| Unizik Nursery & Primary School         | 41 |
| University Auditorium                   | 42 |
| Unizik High School                      | 43 |
| Garba Square                            | 44 |
| Department of Fine & Applied Art        | 45 |
| Faculty of Social Sciences              | 46 |
| Banks                                   | 47 |

- |                        |              |                      |
|------------------------|--------------|----------------------|
| Surface Flow Direction | ●            | Building             |
| → East                 | ← West       | ~ Seasonal Stream    |
| ↘ South-East           | ↙ North-West | 🌿 Vegetation         |
| ↓ South                | ↑ North      | □ Boundary           |
| ↙ South-West           | ↘ North-East | ▨ Under Construction |

Coordinate System:  
WGS 1984 UTM Zone 32N  
Projection: Transverse Mercator  
Datum: WGS 1984  
False Easting: 500,000.0000  
False Northing: 0.0000  
Central Meridian: 9.0000  
Scale Factor: 0.9996  
Latitude Of Origin: 0.0000  
Units: Meter



Prepared by  
Department of Surveying & Geoinformatics, NAU  
Certified by  
Prof. Joel. I. Igbokwe (FNIS)  
©2018, All rights reserved.

290440 291120 291800 292480 293160

692480  
691800  
691120  
690440  
689760